

WIWA Injection Units – Inject HD 1 and Inject HD 2
 WIWA Plural Component Gel Injection Unit – 2K-Inject 14025

WIWA INJECTION EQUIPMENT

WIWA Inject HD 1 / HD 2
 new technology for
 resin injection

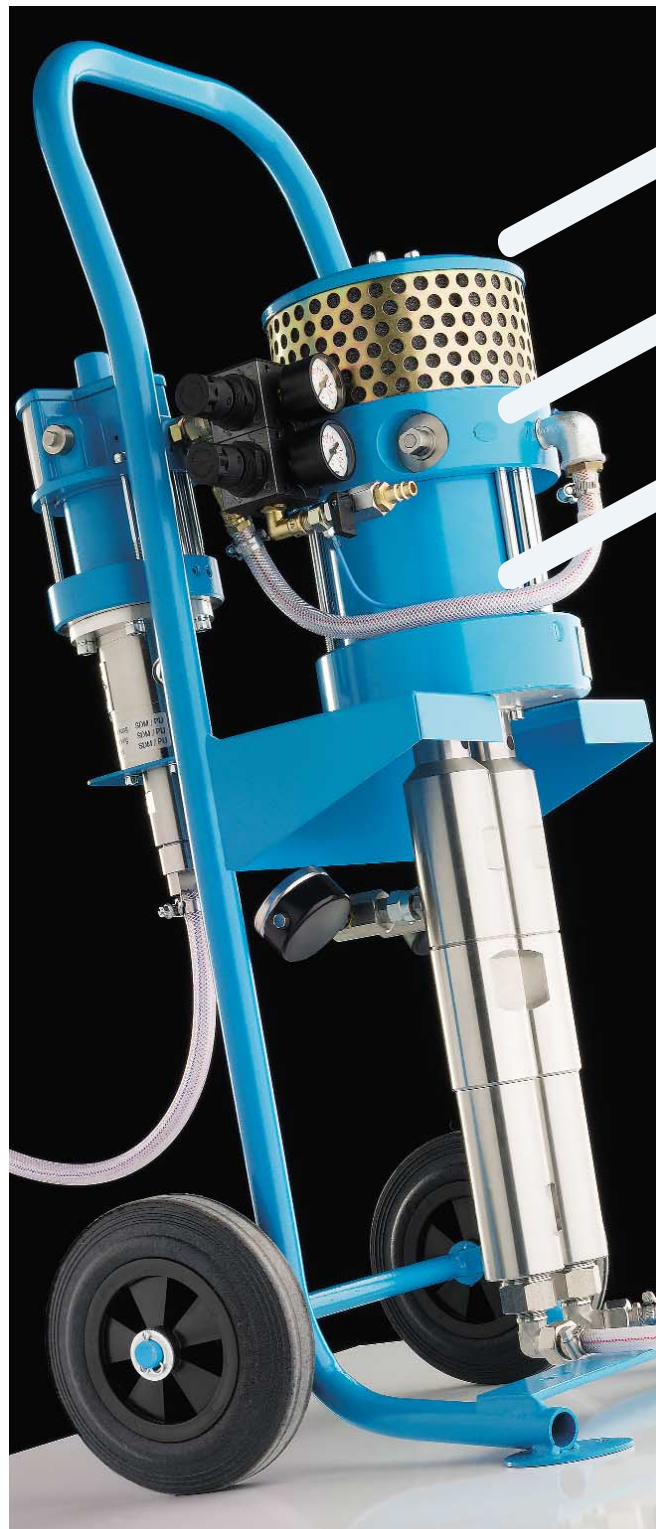
The HD 1 and HD 2 injection units are especially suited for injecting low viscosity epoxy or polyurethane resins and both comply with the standards found in the German ZTV Riss codes.

WIWA 2K-Inject 14025
 mature technology for
 gel injection

The newly developed WIWA plural component gel injection unit, 2K-Inject 14025, not only exhibits WIWA's strength in design, but is also evidence of WIWA's competence in structural preservation and environmental consciousness.



Mixing unit complete with static mixer and separate flush assembly for the A and B components



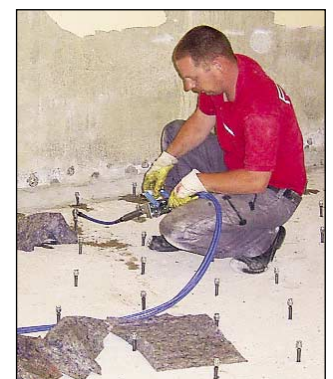
Setting new standards for equipment used in structural preservation

2K-Inject 14025

- Fixed mixing ratio
- Easy to operate
- Highly accurate metering
- Compact design

Inject HD 1 / HD 2

- Powerful
- Easy to operate
- Ideal for working from scaffolds, in shafts or in tunnels
- Freely adjustable injection pressure
- Complies with the German ZTV Riss standards



Professional sealing of a floor slab against water penetration using a plural component acrylate gel

POWERFUL AND VERSATILE

INJECT HD 1 / HD 2



The **WIWA Inject HD 1** is equipped with a feed funnel for approx. 1.5 liters (3 pints) of resin and an injection lance.



The **WIWA Inject HD 2** with 6 liter (1.5 gallon) feed funnel



Injection gun

WIWA Inject HD 1 & HD 2 Advanced technology

- Compact, portable and powerful pneumatic injection equipment
- The WIWA Inject HD 1 and HD 2 are especially suited for injecting low viscosity epoxy or polyurethane resins
- The WIWA Inject HD 1 and HD 2 are easy to use and transport, making them ideal if working from a scaffold or in a shaft or tunnel
- Both units comply with the standards found in the German ZTV Riss codes
- Listening to the motor will signal to the operator how close the injection process is to completion. As soon as the motor stops, the hole is filled
- The injection pressure is freely adjustable
- The advantage of air-driven piston pumps compared to electric-driven diaphragm pumps is the fact that the air motor stops running when each hole is full

This means:

less wear and no thermal reaction caused by pumping resin from one container to another, thus avoiding a shorter pot life due to increased resin temperature.

Inject HD 1 Basic Version

The WIWA Inject HD 1 is delivered with a 7.5 m (24.6 ft.) high-pressure injection hose, including an injection lance with coupling. Furthermore, the unit is fitted with a feed funnel for approx. 1.5 liters (3 pints) of injection resin. The complete pump is mounted to a sturdy frame.

Inject HD 2 Basic Version

The WIWA Inject HD 2 is delivered with a 7.5 m (24.6 ft.) high-pressure injection hose, including an injection lance with coupling. Furthermore, the unit is fitted with a feed funnel for approx. 6 liters (1.5 gallons) of injection resin. The complete pump is mounted to a sturdy frame.

Accessories:

Injection gun including fluid hose, hydraulic coupling and pressure gauge
Order No.: 0631424

TECHNICAL SPECIFICATIONS	WIWA Inject HD 1	WIWA Inject HD 2
Pressure ratio:	33 : 1	33 : 1
Max. free-flow output:	3 l/min (.8 gal./min.)	3 l/min (.8 gal./min.)
Max. operating pressure:	264 bar (3828 psi)	264 bar (3828 psi)
Max. inbound air pressure:	8 bar (116 psi)	8 bar (116 psi)
Output per cycle:	14 ccm (.47 fl.oz.)	14 ccm (.47 fl.oz.)
Gross weight:	8 kg (17.6 lbs.)	9 kg (19.8 lbs.)
Feed funnel capacity:	1.5 l (3 pts.)	6 l (1.5 gal.)
Order No.	0644426	0644517

MATURE MACHINE TECHNOLOGY FOR ENVIRONMENTALLY FRIENDLY ACRYLATE GELS

2K-INJECT 14025



The newly developed WIWA 2K-Inject 14025 plural component injection unit for gel not only exhibits WIWA's strength in design, but is also evidence of WIWA's competence in structural preservation and environmental consciousness.

Due to the fact that acrylate gels are not reliant upon the use of organic solvents, they are environmentally sound and can be processed easily and accurately using the WIWA 2K-Inject 14025.

Typical applications for this pneumatic system are sealing cellar walls against backwater or seepage, providing a horizontal barrier against moisture and/or sealing other large surfaces that come into direct contact with the ground, such as tunnels, shafts or channels, thus solidifying the surrounding earth.

The compact design and easy handling make this new plural component injection unit perfect for sealing areas in hard to reach places. The 1:1 mixing ratio is very accurate and can be maintained easily over long periods of operation.

A frame mounted flush pump ensures that the system can be cleaned quickly and easily, avoiding hardening of any residue gel within the lines or mixing unit.

2K-Inject 14025 Basic Version

- High-pressure pump
- Flush pump
- Cart frame
- Flush pump suction hose

Optional accessories:

Description	Order No.
Mixing unit complete with static mixer and individual flushing arrangement for the A and B components	0642617
Alternative: Mixing unit complete with static mixer and flush arrangement	0641950
Coupling	0641973
Male adapter	0210854
Hydraulic connection	0411302
Male adapter	0218820
Slide coupling	0641197
Male adapter	0218820
Mounting kit for circulation	0641970
Mounting kit for feed funnels	0643529
Mounting kit for suction hose	0641933
Suction hose* NW4, 7.5 m (25 ft.)	0638610

*WARNING: 3 hoses are required total

System advantages:

- Air driven plural component injection unit for processing and for processing sealant gels and resins
- Fixed 1:1 mixing ratio
- Non-stop, even flow of material
- Precise mixing results
- Easy to operate
- Separate flush pump
- Extremely compact, cart mounted

TECHNICAL SPECIFICATIONS	2K-Inject 14025
Pressure ratio:	25:1
Max. operating pressure:	200 bar (2900 psi)
Max. inbound air pressure:	8 bar (116 psi)
Output per cycle:	86 ccm (2.9 fl.oz)
Order No.	0641976



**Spray Technology
Material Transfer**

WIWA
Wilhelm Wagner GmbH & Co. KG
Gewerbestraße 1-3
P.O.B. 29
35631 Lahnau, Germany

E-Mail: info@wiwa.de
Internet: www.wiwa.de

Telephone: +49 (0) 64 41/6 09-0
Telefax: +49 (0) 64 41/6 09-50/-58

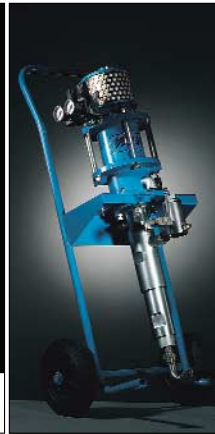
THE WIWA EQUIPMENT PROGRAM



**WIWA Airless Paint Spray Equipment
in every performance class**



WIWA AirCombi / Air Assisted Lacquering Units



WIWA Hot Job Airless Hot Spray Equipment



**WIWA DUOMIX
Plural Component Spray Equipment**



WIWA Material Transfer Pumps



WIWA Extrusion pumps



**WIWA Airless and Air Combi
Paint Spray Guns**

We would be pleased to provide you with a detailed offer covering all WIWA equipment and related accessories.

Your local distributor is:

Technical changes reserved. WI12054. 08.05. © 2005 WIWA Wilhelm Wagner GmbH & Co. KG. Content layout and photographs: Leineweber W&V