



Your project deserves it.



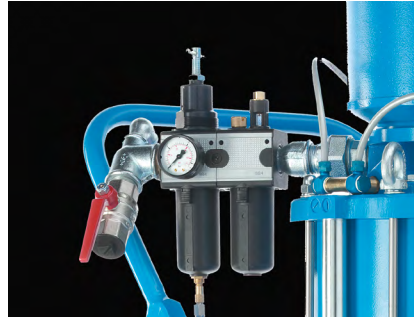
DUOMIX PFP

WWW.WIWA.COM

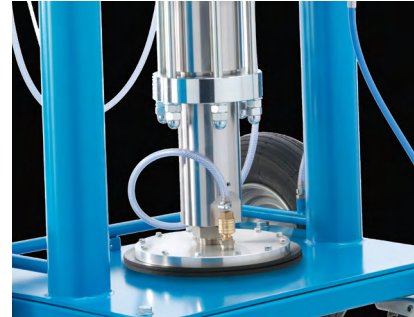
WIWA HERKULES PFP - Single feed unit



HERKULES PFP



HERKULES PFP



HERKULES PFP

Fire and its heat present a great risk to life and property. In the eventuality of a fire, the steel structure of a building will eventually collapse once the steel attains the critical core temperature (around 550°C). An intumescent coating will delay this process by creating a layer of char between the steel and fire.

In close cooperation with leading manufacturers, WIWA has developed a wide range of plural application systems for intumescent coatings and optimized them on an ongoing basis.

REASONS TO CHOOSE WIWA HERKULES PFP

- HERKULES PFP single feed unit for the use for smaller areas and for repairs.
- State-of-the-art technology Made in Germany.
- Highly qualified employees, agents and distributors world- wide for local sales and service.
- Commissioning and training at customers location or job site.
- Supply of spare parts and accessories readily available.
- Competent customer service in the local language.
- Safe and easy system operation.
- Top quality and service at a fair price.



HERKULES PFP

WIWA developed this single feed HERKULES PFP unit for the use for smaller areas and for repairs.

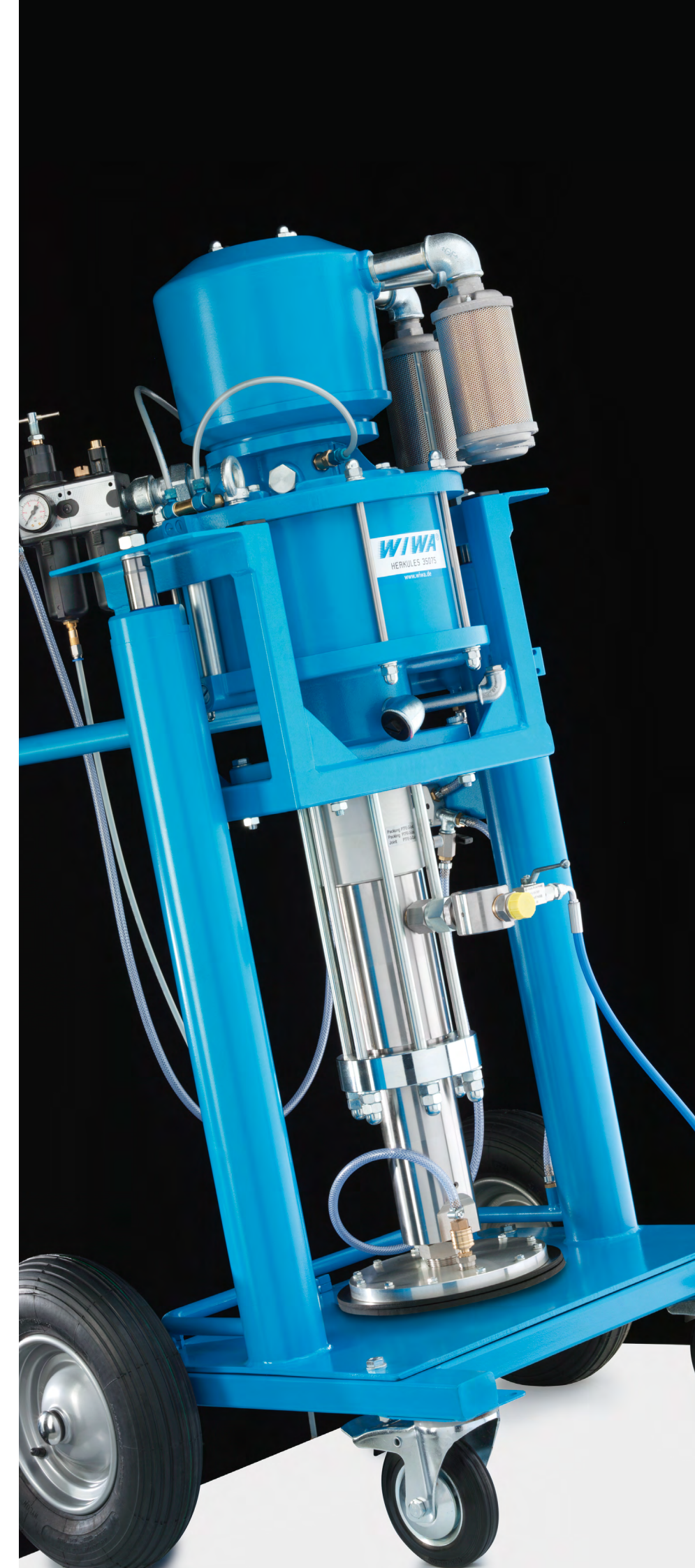
Pressure ratio: 75:1
 Output per 40 cycle: 9 l/min
 Approx. weight: 230 kg (507 lbs)

On request the HERKULES can be outfitted to meet ATEX Zone 1 requirements.

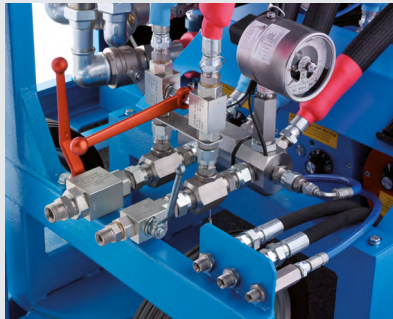
Wide variety of accessories available.



Pneumatic manual agitator with gearbox and two counter-rotating agitator shafts
 Order No. 0652214



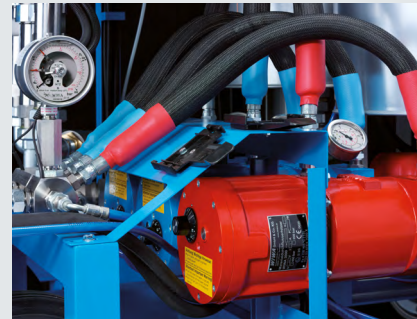
WIWA DUOMIX 333 PFP - Twin feed unit



DUOMIX 333PFP - adapter for hose package



DUOMIX 333PFP mixing block



DUOMIX 333PFP material flow heater

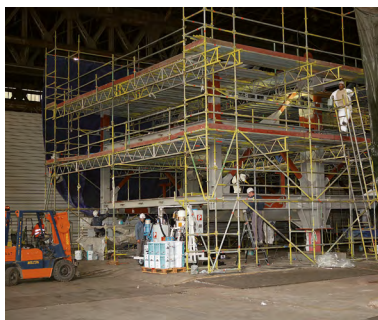
In close cooperation with major material manufacturers, WIWA has developed plural component spraying equipment for passive fire protection applications.

TYPICAL SYSTEMS INCLUDE

- Heated, insulated pressure tanks available in a variety of sizes.
- Electrical and/or pneumatic agitators.
- Multi-purpose frame, easy to transport.
- Pressure and metering monitor providing automatic shutdown.
- Material feed with shovel pumps
- Timer for automatic preheating of material
- Mechanical level control of pressure tanks with automatic filling
- Shovel pumps mounted on pneumatic rams.
- Mechanical level control for the pressure tanks with automatic refill.

REASONS TO CHOOSE WIWA

- Over 300 DUOMIX systems in use successfully worldwide, under the toughest conditions.
- State-of-the-art technology Made in Germany.
- Highly qualified employees, agents and distributors world- wide for local sales and service.
- Commissioning and training at customers location or job site.
- Supply of spare parts and accessories readily available.
- Competent customer service in the local language.
- Safe and easy system operation.
- Individual modifications possible due to modular concept.
- Top quality and service at a fair price.



SYSTEM SPECIFICATIONS

DUOMIX 333 PFP

Mixing ratio: 1:1 / 2:1 / 2,33:1
 Working Pressure: 429 / 408 / 427 bar
 Pressure ratio: 66:1 / 58,34:1 / 61:1

Output per
 40 cycle / 1:1 / ca.12 l/min
 2:1 / ca.13 l/min
 2,33:1 / ca.13 l/min

Air consumption: 5000 l/min.
 (177 scfm)

Electrical supply: 1:1 = 400V / 230V
 2:1 = 400V
 2,33:1 440V / 400V / 230V

Approx. weight: 1100 kg (2425 lbs)

Dimensions (m) 2,15 x 1,10 x 2,05
 85" x 43" x 81"
 (L x W x H)

Other configurations available.

DUOMIX 333 PFP HYDRAULIC

Mixing ratio: 2,33 1
 Working Pressure: 460 bar
 Pressure ratio: 1,84 : 1
 Output per
 40 cycle: 20,44 l/min
 Electrical supply: 400V
 or at customers request

Approx. weight: 1100 kg (2425 lbs)
 Dimensions (m) 2,15 x 1,10 x 2,05
 85" x 43" x 81"
 (L x W x H)

Other configurations available.



WIWA DUOMIX 333 PFP -ZONE 1-



Pressure encapsulated housing



DUOMIX 333 PFP -Zone 1- control box



DUOMIX 333PFP -Zone 1- pneumatic agitators

Lloyd's Register certified that one of our Duomix 333 PFP units satisfies the requirements for operation in a Zone 1 hazardous area as defined in BS EN 60079-10-1:2009. ATEX Designation CE II2Gc IIB T3.

The approved WIWA DUOMIX 333 PFP -Zone 1- is based on the successful DUOMIX 333 unit, but its electrical components have been reduced to a minimum. The electrical controller and filling level meter for the water tanks are protected by pressure encapsulated housing control boxes. All components comply with the ATEX regulations.

TYPICAL SYSTEMS INCLUDE*

- Electrical components protected by pressure encapsulated housing
- Electrical filling level meter protected by pressure encapsulated housing
- Pneumatic agitators
- Pneumatic pressure and metering
- Lifting brackets for easy transport

* Standard DUOMIX 333 PFP configuration but with modifications for Offshore operation



SYSTEM SPECIFICATIONS

DUOMIX 333 PFP -ZONE 1-

Mixing ratio: 1:1 / 2:1 / 2,33:1

Working Pressure: 429 / 408 / 427 bar

Pressure ratio: 66:1 / 58,34:1 / 61:1

Output per
40 cycle /

1:1	/ ca.12 l/min
2:1	/ ca.13 l/min
2,33:1	/ ca.13 l/min

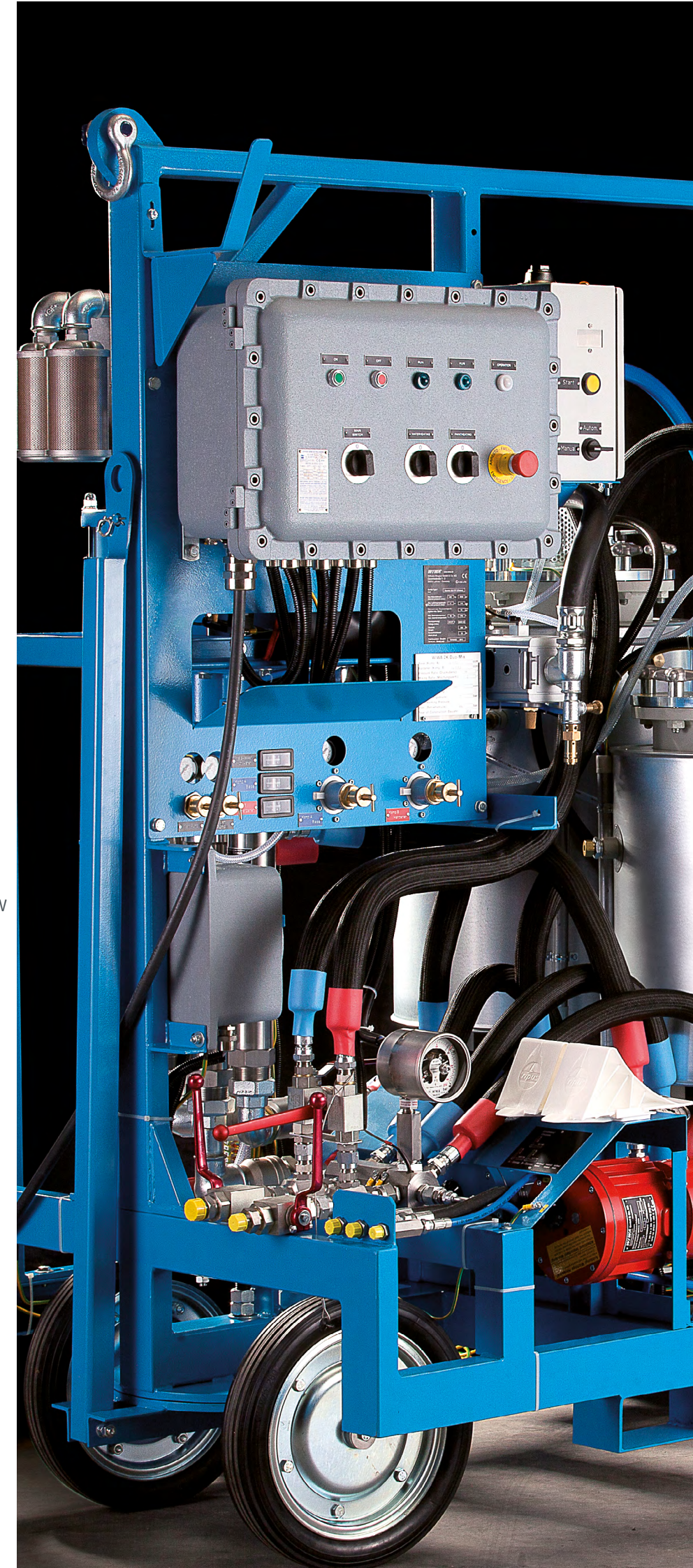
Air consumption: 5000 l/min.
(177 scfm)

Electrical supply: 1:1 = 400V
/
2:1 = 400V
2,33:1 440V / 400V /

Approx. weight: 1200 kg (2645 lbs)

Dimensions (m) 2,15 x 1,10 x 2,05
85" x 43" x 81"
(L x W x H)

Other configurations available.



WIWA DUOMIX 333 PFP



ATEX 94/9/EG

Head Office and Production Germany

WIWA Wilhelm Wagner GmbH & Co. KG
35633 Lahnu, Germany
Phone: +49 (0) 6441 609-0

www.wiwa.com

WIWA Subsidiary USA

WIWA LLC – USA, Canada, Latin America
107 N. Main St.
P.O. Box 398, Alger, OH 45812
Tel.: +1-419-757-0141
Fax: +1-419-549-5173
Toll-Free: +1-855-757-0141

www.wiwausa.com



WIWA DUOMIX 333PFP pressure tank



WIWA DUOMIX 333PFP flushing unit



WIWA DUOMIX 333PFP control unit



WIWA DUOMIX 333PFP rams



WIWA DUOMIX 333PFP main pump



Pressure encapsulated housing